



THE BEHAVIORAL
WELLNESS CENTER

— AT GIRARD —

INSPIRING HOPE...TRANSFORMING LIVES



Annual Report

July 1, 2022-June 30, 2022

Mission, Vision, and Values

Mission

To provide effective, evidence based behavioral health service to participants that inspire hope, encourages change, and improves our community. We offer these services in a manner that is spiritually and culturally sensitive and responsive to community needs.

Vision

To be the region's premier provider of a caring continuum of behavioral health service.

Purpose

To inspire hope and transform lives

Values

CHOICE – Recognizing and supporting the Participant's right to choose

HOPE – Expecting and embracing change

INTEGRITY – Being honest in words and actions and adhering to strong moral and ethical principles

RESPECT – Listening to and acknowledging the concerns and needs of our customers and colleagues



Letter from the CEO for 2022

The year 2022 has been full of both uncertainty and exhilarating accomplishments.

It is with great gratitude we acknowledge that the spread of COVID has slowed down and the seriousness of the illness on vaccinated persons has lessened. What is currently impacting The Bell Well Center is the nationwide staffing shortage, especially in the healthcare industry. The pandemic, the economy and the “great resignation” has made it difficult for us to staff and open new programs that are on our drawing board.

Thanks to our executive team and expanded recruiting efforts, we will open our Withdrawal Management Unit before the end of the year. The goal is to add up to 38 additional beds for clients. This unit will address the reality of the drug fentanyl on the streets of Philadelphia and the effect it is having on our clients and the necessity for a revised approach to their recovery.

The launch of our Mobile Unit/RV has resulted in a closer relationship with the communities we serve and the opportunity to provide even more care to more clients.

We have again received recognition as one of the top 200 addiction centers in the United States by Newsweek Magazine. All our psychiatric units have been made completely anti-ligature and as a result, we received Joint Commission accreditation of our private psychiatric hospital giving our entire campus The Joint Commission gold seal of quality care.

The Be Well Center has placed intentional focus on training and hiring regarding diversity, equity and inclusion in our organization, initially focusing on management and physicians. In addition, all department heads have received empathy training.

Our outreach to community and governmental partners has resulted in partnerships with several institutions of higher education, a tertiary hospital and several others in the pipeline and grants from state and municipal sources.

After many years without one, we are offering our staff a retirement plan beginning in October and holding our first fundraising event to establish a comprehensive therapeutic horticulture garden and program for our clients.

To expand our governance capacity, we are extremely happy to welcome a new member to our board of directors, Ms. Idette Elizondo, who brings, amongst many skills her deep knowledge of strategic planning.

I look forward to fully staffing every unit, programmatic expansion on and beyond our current campus; and addressing the needs of our clients and staff in new and innovative ways.

The Behavioral Wellness Center at Girard remains committed to serving our community with the best care possible. Be well.

Gerri H. Walker

Meet our Leadership



Gerri H. Walker: President/CEO



*Laura Boston-Jones M.Ed., CAC
Senior VP of Behavioral Health Svcs.,*



*Wanda Nolasco, MSN, MBA, RN
VP of Patient Services*



*Douglas Maier: CPA, MS
Chief Financial Officer,*



*Xavier Bancroft MBA, MHSA,
VP of Operations*



*Dr. Ilia Nikhinson, M.D.,
Chairman of
Behavioral Medicine*



*Sharita Barnett:
VP of Human Resources*

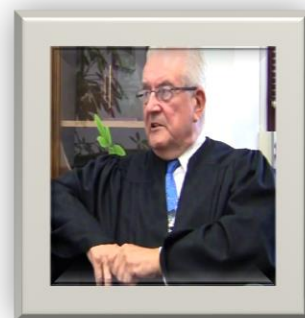
The Board of Directors



*Dominic Sabatini
Past Chair*



*Rev. Ralph E. Blanks
Board Chairman*



*The Hon. Eugene E. Maier
Secretary*



John Meacham



Folasade Olanipekun-Lewis



James J. Cuorato



William Vanore



Miles Ladenheim MD., JD



The Hon. Felice Stack



M. Idetta Elizondo

The Behavioral Wellness Center at Girard –Services

Inpatient Psychiatric Services

The Psychiatry Programs consist of acute, sub-acute and extended acute and services. Through the multidisciplinary team process, they provide a wide range of clinical services including diagnostic evaluation, medication, and coordination of general medical and psychiatric care in a therapeutic milieu. The Psychiatric Programs functions in consultation with the appointed case managers from the City of Philadelphia's Office of Mental Health in treatment planning and disposition, evaluation of therapeutic progress, goal planning, arranging for on-going appropriate after-care treatment and involvement in the community networking resources available. Services are provided by a multidisciplinary staff, within a highly structured treatment program.

Substance Use Disorder Services

Medicated Assisted Treatment

Medicated Assisted Treatment is available at all levels of care throughout the Behavioral Wellness Center at Girard including, outpatient, and non-hospital residential rehabilitation. Three types of medication are available to those seeking recovery from substance use disorders. As with all medications used in medication-assisted treatment (MAT), they are prescribed as part of a comprehensive treatment plan that includes counseling and participation in social support programs. Participants may choose to augment treatment with Methadone, Buprenorphine (Suboxone) or Vivitrol.

IOP/CAP Outpatient Program

The CAP Outpatient Program is a component of the Substance Use Disorder Programs of Girard Medical Center- the CAP Outpatient Program seeks to assist participants in establishing healthy alternatives to drug or alcohol seeking activity. It utilizes psychological support in a pleasant, relaxed atmosphere where the participant is treated with respect and dignity.

The Goldman Clinic

The Goldman Clinic is an outpatient program providing a wide range of opiate use disorder educational services and individual and group counseling with medication assisted treatment (Methadone).

Residential /Inpatient Substance Use Disorder Services

The Residential Services at The Behavioral Wellness Center at Girard includes, (5) programs funded through the Philadelphia Department of Behavioral Health and Intellectual disAbilities (DBHIDS). Services may be paid for by Community Behavioral Health (CBH), the Office of Mental Health (OMH) or the Office of Addiction Services (OAS/BHSI). The programs are licensed or approved by the Department of Health, Division of Drug and Alcohol Program Licensure to provide hospital and non-hospital Addiction services.

The Programs include:

- Detoxification and Rehabilitation Unit

- Torre De La Raza-Latino Men- and TDLR-Women Helping other Women (WHOW)

- The Return Program

- Miracles in Progress

- RTFA-Dual Diagnosis

The Behavioral Wellness Center

Offers seven day– 24-hour access to care via its Behavioral Intake Unit

Call 215-787-2407



The Behavioral Wellness Outreach Team Performs warm hand offs with the Philadelphia Fire and Rescue for those recovering from overdose.

The team travels to CRC's Assessment sites, and homeless shelters to conduct outreach and to provide Pick-ups for those seeking treatment.

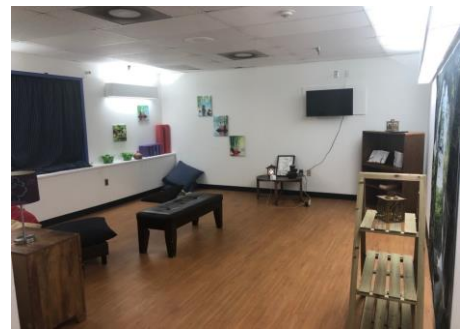
The Behavioral Wellness Center at Girard launched its Mobile Assessment Unit in May of 2022. The van is staff with an Assessor, a Nurse and outreach coordinator with "lived experience". The team conducts outreach and assessment and can provide immediate access to treatment.



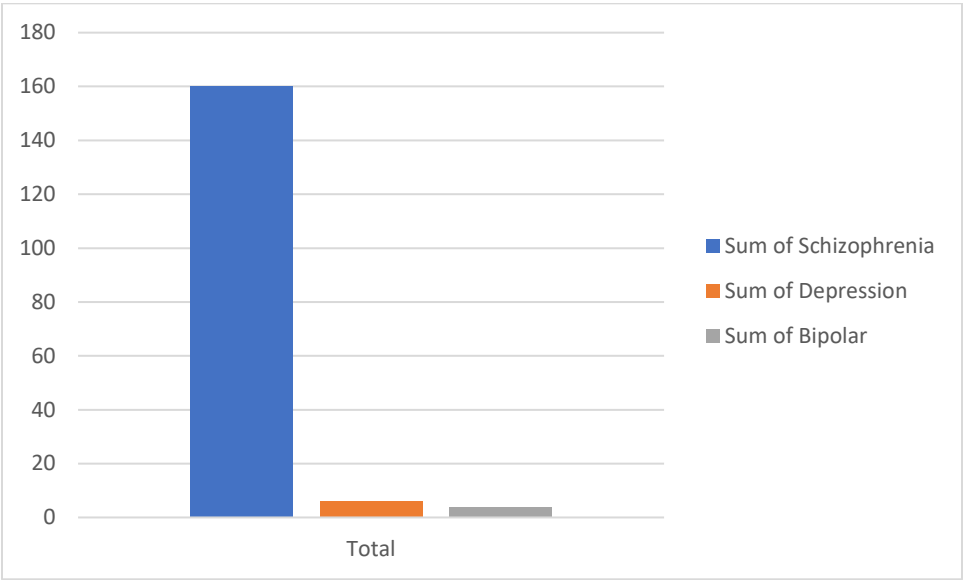
Going to the Well



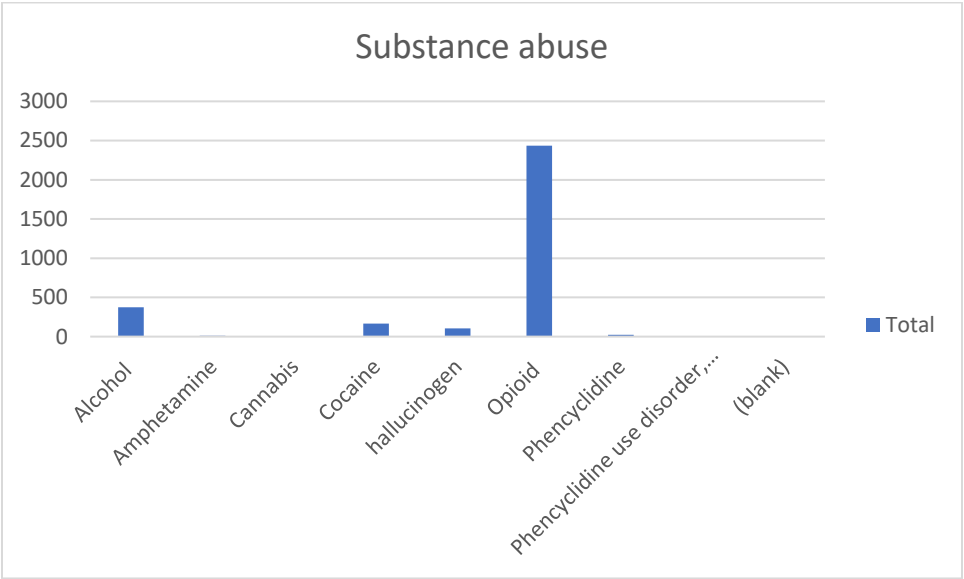
The Behavioral Wellness Center at Girard offers Wellness Programs including Meditation, Movement, Music and Exercise for Participants and Staff



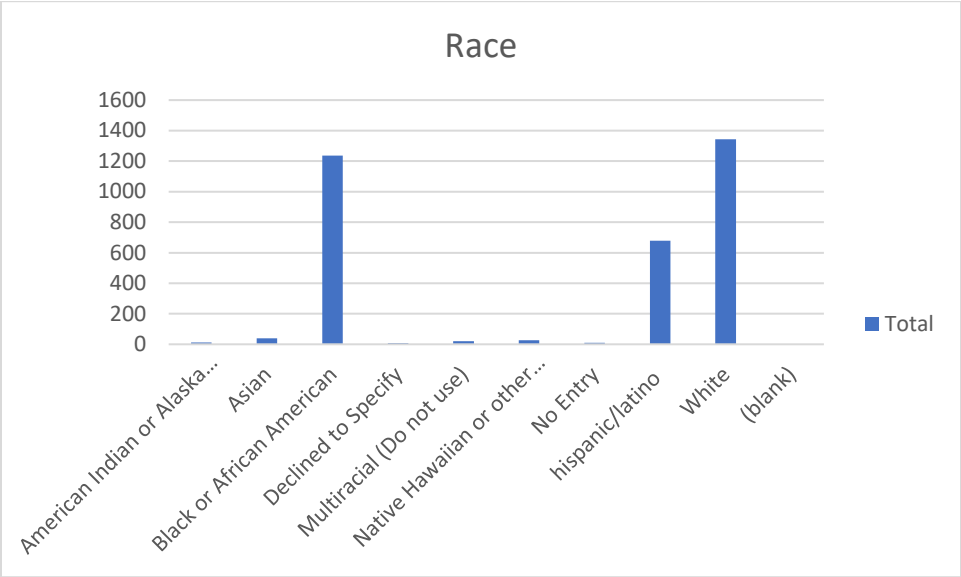
Participant Demographics



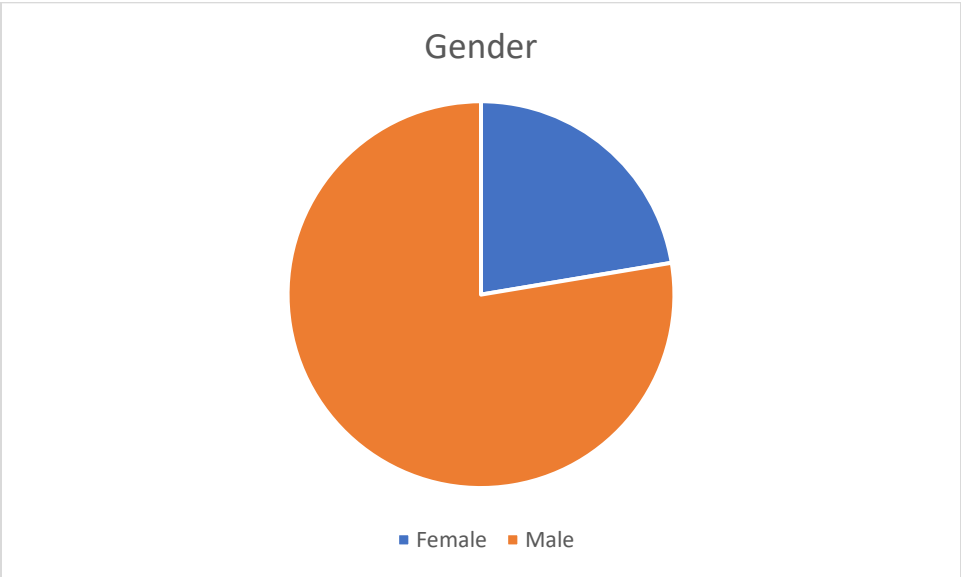
Bipolar	4
Depression	6
Schizophrenia	160



Alcohol	336
Cannabis	3
amphetamine	11
Cocaine	139
Opioid	2181
phencyclidine	24
Hallucinogen	84

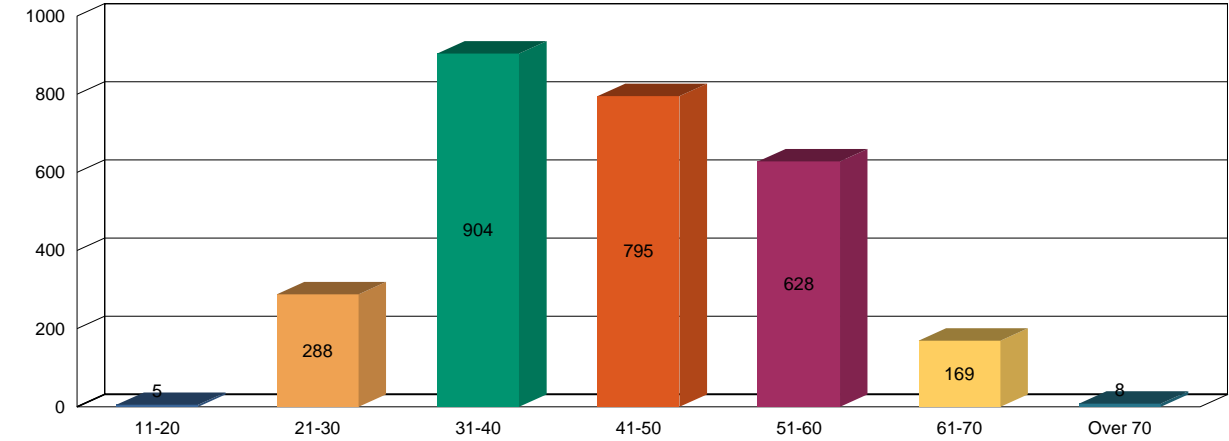


Asian	39
Black	1034
American Indian	12
mixed race	20
Native Hawaiian	26
Latino	559
White	1119
declined	3



Female	615
Male	2182

Admissions By Age



The Behavioral Wellness Center at Girard
Statements of Operations and Changes in Net Assets
Years Ended June 30, 2021, and 2020

	2021	2020
Changes in Net Assets Without Donor Restrictions		
Net patient service revenues	41,005,679	40,522,305
Other revenues	<u>1,772,885</u>	<u>1,985,815</u>
Total operating revenues	42,778,564	42,508,120
Expenses		
Salaries and wages	22,060,431	21,508,676
Agency staffing	257,956	192,809
Benefits	6,072,853	6,358,644
Physician fees	71,881	152,804
Other professional fees	563,159	376,449
Medical supplies	180,334	222,951
Pharmaceuticals	1,266,376	1,049,017
Other supplies	323,798	180,649
Utilities	488,749	620,035
Purchased services	3,469,999	3,865,962
Other direct expenses	4,490,131	4,222,653
Interest	191,654	407,970
Insurance	1,310,202	1,227,585
Depreciation	<u>421,299</u>	<u>217,039</u>
Total expenses	41,168,822	40,603,243
Revenues in excess of expenses and increase		
in net assets without donor restrictions	<u>1,609,742</u>	<u>1,904,877</u>
Changes in Net Assets with Donor Restrictions		
Contributions for Capital Purposes	154,454	- Net change in
beneficial interest in perpetual trusts	<u>1,592,487</u>	<u>(123,605)</u> Net assets
released from restrictions for operations		-
(Decrease) increase in net assets with donor restrictions	1,746,941	(123,605)
Increase in net assets	3,356,683	1,781,272
Net Assets, Beginning	<u>10,034,534</u>	<u>8,253,262</u>
Net Assets, Ending	<u>13,391,217</u>	<u>10,034,534</u>